

**NOTICE OF MEETING OF THE COMMISSIONERS' COURT OF
HOCKLEY COUNTY, TEXAS**

Notice is hereby given that a Special meeting of the above named Commissioners' Court will be held on the 13TH day of July, 2015 at 10:00 a.m. in the Commissioners' Courtroom, Hockley County Courthouse, Levelland, Texas, at which time the following subjects will be discussed to-wit:

1. Read for approval the minutes of a Regular Meeting of the Commissioners Court held Monday, July 6, 2015.
2. Read for approval all monthly bills and claims submitted to the court and dated through July 13, 2015.
3. Consider and take necessary action to approve ad valorem tax refund.
4. Review the letter from the Texas Commission on Jail Standards.
5. Review Railroad Grade Crossing Warning Devices.
6. Consider and take necessary action to appoint a Consultant Selection Review Committee in conjunction with runway improvements at the Levelland Municipal Airport.
7. Consider and take necessary action to approve the Intergovernmental Lease Agreement Extension Amendment with the Texas Department of Family and Protective Services.

COMMISSIONERS' COURT OF HOCKLEY COUNTY, TEXAS

BY: _____

Ray D. Sand
Hockley County Judge

I, the undersigned County Clerk, do hereby certify that the above Notice of Meeting of the above named Commissioners' Court, is a true and correct copy of said Notice on the bulletin board at the Courthouse, and at the east door of the Courthouse of Hockley County, Texas, as place readily accessible to the general public at all times, on the 10TH day of July, 2015, and said Notice remained so posted continuously for at least 72 hours preceding the scheduled time of said meeting.

Dated this 10TH day of July, 2015.

Irene Gumula

Irene Gumula, County Clerk, and Ex-Officio
Clerk of Commissioners' Court, Hockley County, Texas

Filed for Record
at _____ o'clock _____ M.

JUL 10 15

Irene Gumula
County Clerk Hockley County, Texas

SPECIAL MEETING
JULY 13, 2015

Be it remembered that on this the 13TH day of July A.D. 2015, there came on to be held a Special meeting of the Commissioners' Court, and the Court having convened in Special session at the usual meeting place thereof at the Courthouse in Levelland, Texas, with the following members present to-wit:

Larry Sprowls	County Judge
Curtis D. Thrash	Commissioner Precinct No. 1
Larry Carter	Commissioner Precinct No. 2
J. L. "Whitey" Barnett	Commissioner Precinct No. 3
Thomas R "Tommy" Clevenger	Commissioner Precinct No. 4

Irene Gumula, County Clerk, and Ex-Officio Clerk of Commissioners' Court when the following proceedings were had, to-wit:

Motion by Commissioner Barnett, seconded by Commissioner Thrash, 4 Votes Yes, 0 Votes No, that the Minutes of a Regular meeting of the Commissioners' Court, held on the 6th day of July, A.D. 2015, be approved and stand as read.

Motion by Commissioner Carter, seconded by Commissioner Clevenger, 4 Votes Yes, 0 Votes No, that all monthly claims and bills, submitted to the Court, and dated through July 13th, A. D. 2015, be approved and stand as read.

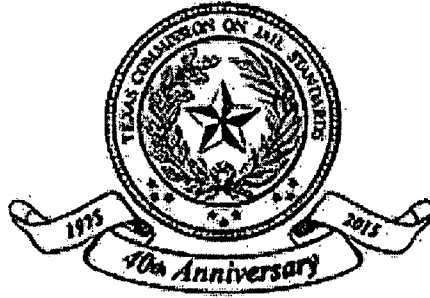
Motion by Commissioner Barnett, seconded by Commissioner Thrash, 4 Votes Yes, 0 Votes No, that Commissioners' Court approve the tax refund in the amount of Five Hundred Fifty Five Dollars and Twenty Five Cents (\$555.25) to Felipe & Jessica Alvarado, as per request of Debra Bramlett, Tax Assessor/Collector.

Commissioners' Court saw the letter from the Texas commission on Jail Standards.

Commissioners' Court saw the Railroad Grade Crossing Warning Devices. TX DOT left Plans of proposed Railroad Grade Cross Warning Devices.

TEXAS COMMISSION ON JAIL STANDARDS

EXECUTIVE DIRECTOR
Brandon S. Wood



P.O. Box 12985
Austin, Texas 78711
Voice: (512) 463-5505
Fax: (512) 463-3185
<http://www.tcjs.state.tx.us>
info@tcjs.state.tx.us

June 22, 2015

Sheriff R.C. Cheek
Hockley County Sheriff's Office
1310 Avenue H
Levelland, TX 79336-6030

Dear Sheriff Cheek,


The Texas Commission on Jail Standards wishes to acknowledge the excellent work of the Hockley County Sheriff's Office with a Certificate of Compliance for the Hockley County Jail. The most recent inspection of your facility on June 19, 2015 by Texas Commission on Jail Standards Inspector Phillip Bosquez has demonstrated that your facility is in compliance with Texas Minimum Jail Standards.


The Certificate of Compliance demonstrates your outstanding leadership and the diligent work of your staff in complying with minimum jail standards. In addition, this achievement is a direct result of your office's commitment to excellence and is an example of dedication and professionalism in maintaining a safe, secure, and sanitary facility.

Providing the essential budgetary support for jail operations is also imperative to achieving compliance, so let me also congratulate the Hockley County Commissioners' Court for their vital support of jail operations.

The citizens of Hockley County should be proud of your combined efforts, as is the Texas Commission on Jail Standards.

Respectfully,


Brandon S. Wood
Executive Director

BW/lb 

cc: Judge Larry D. Sprowls, Hockley County

VOL. 62 PAGE 622

Stanley D. Egger, Abilene, Vice Chair
Irene A. Armendariz, Austin
Jerry W. Lowry, New Caney

Sheriff Dennis D. Wilson, Groesbeck
Sheriff Gary Painter, Midland

Dr. Michael M. Seale, M.D., Houston
Larry S. May, Sweetwater
Allan D. Cain, Carthage

"The Commission on Jail Standards welcomes all suggestions and will promptly respond to all complaints directed against the agency or any facilities under its purview".
To empower local government to provide safe, secure and suitable local jail facilities through proper rules and procedures while promoting innovative programs and ideas



YELLOWHOUSE MACHINERY CO.
Texas • Oklahoma

DREW COOPER
TXDOT
806 577-1949

Tex DOT
2nd PLANS FOR RAILROAD
GRADE CROSSING + WARNING DEVICES
* ALAMO STREET
* F.M. 3261

whitey

HOWARD GARLINGTON
806.763.0473 • 3405 E. Slaton Hwy • Lubbock, Texas 79404
Cell: 806.759.7952 • 1.800.658.9878 • Fax: 806.763.0331
howardg@yellowhouse.us

COUNTY _____ PROJ. NO. _____
 HWY. NO. _____ LETTING DATE: _____
 DATE ACCEPTED: _____

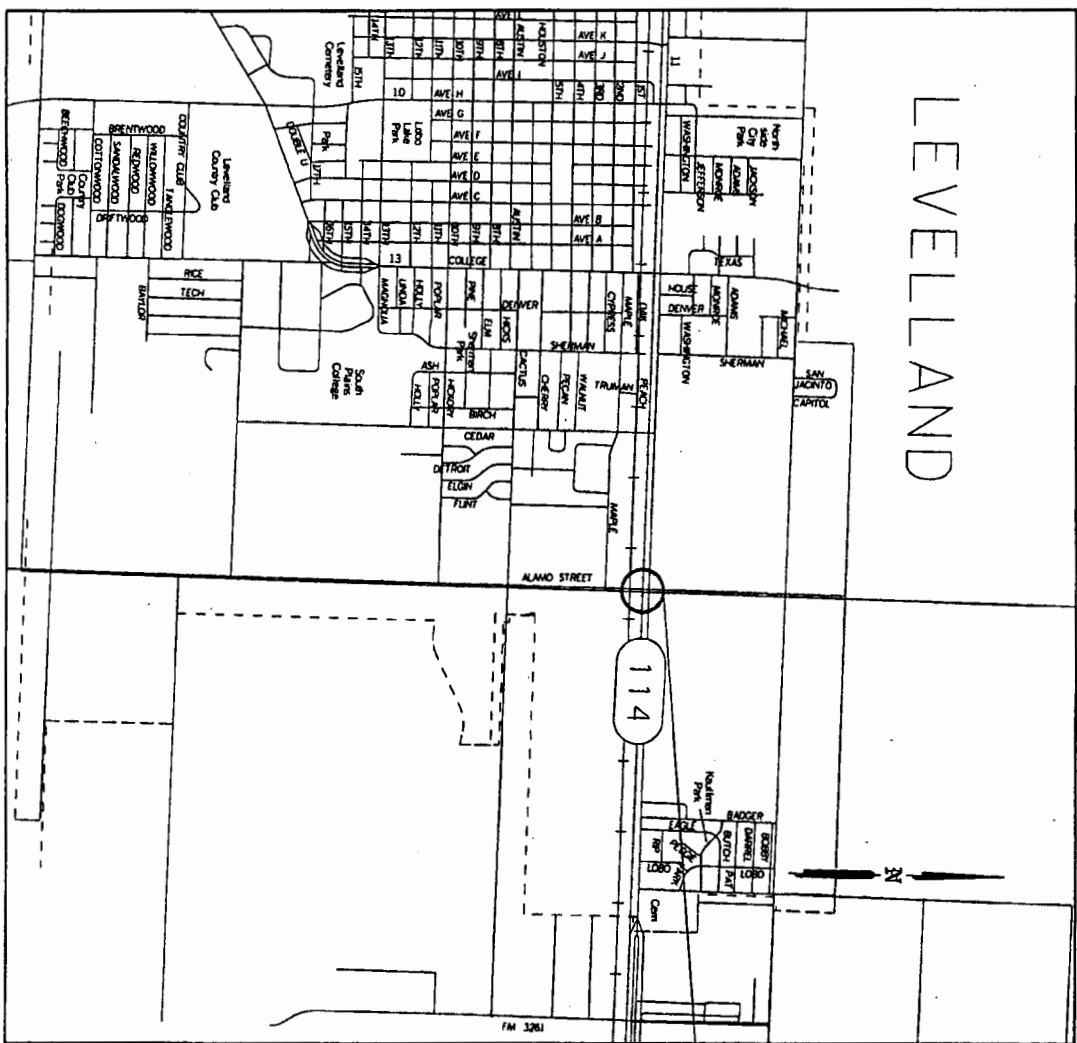
INDEX OF SHEETS

SHEET NO.	DESCRIPTION
1	TITLE SHEET
2	GENERAL NOTES
3	LAYOUT SHEET
4	WIRING DIAGRAM
5	CROSSINGS

THE DIAGNOSTIC TEAM IN ACCORDANCE WITH TERMS OF THE STATE CONTRACT AND ARE HEREBY AUTHORIZED FOR CONSTRUCTION.

STATE OF TEXAS
 DEPARTMENT OF TRANSPORTATION

PLANS OF PROPOSED
 RAILROAD GRADE CROSSING WARNING DEVICES
 ALAMO STREET IN LEVELLAND



HOCKLEY COUNTY
 NO SCALE

© 2015 by Texas Department of Transportation
 (512) 416-2055; all rights reserved

Sheet No.	Sheet Description	Scale
1	Levelled	1" = 100'
2	Levelled	1" = 100'
3	Levelled	1" = 100'
4	Levelled	1" = 100'
5	Levelled	1" = 100'

THE RAILROAD COMPANY SHALL ERECT AND MAINTAIN SUCH BARRICADES AND WARNING SIGNS OR USE SUCH PRECAUTIONS AS MAY BE NECESSARY IN THE OPINION OF THE PROJECT ENGINEER TO PROTECT THE HIGHWAY FROM DAMAGE DURING THE INSTALLATION OF THIS PROJECT. THE ASSOCIATION OF AMERICAN RAILROADS, SIGNAL SECTION, SPECIFICATIONS SHALL GOVERN FOR THIS PROJECT.

PROJECT STP
 CONTROL
 DOT NO. 017624S



VOL. 62 PAGE 624

GEORGE J. VILLARREAL, P. E.

APPROVED FOR APPROVAL: _____ DATE: _____
 COUNTY: _____

APPROVED FOR CONSTRUCTION: _____ DATE: _____
 DIRECTOR OF TRAFFIC OPERATIONS

THESE PLANS WERE DEVELOPED BY A MEMBER OF THE DIAGNOSTIC TEAM IN ACCORDANCE WITH THE STATE CONTRACT AND ARE HEREBY AUTHORIZED FOR CONSTRUCTION.

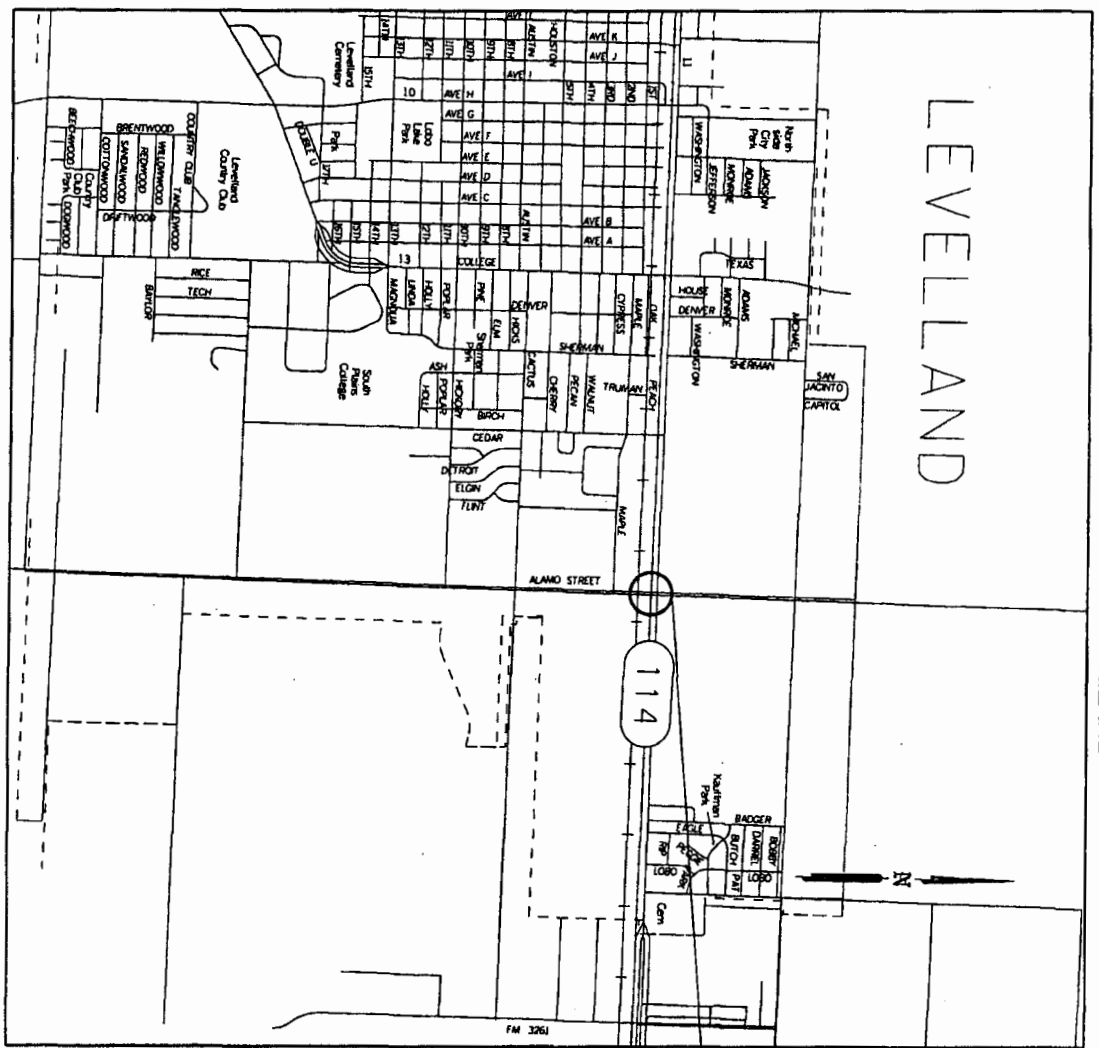
COUNTY _____ PROJ. NO. _____
 HWY. NO. _____ LETTING DATE: _____
 DATE ACCEPTED: _____

INDEX OF SHEETS

SHEET NO.	DESCRIPTION
1	TITLE SHEET
2	GENERAL NOTES
3	PLANS OF PROPOSED
4	WARNING DEVICES
5	WARNING DEVICES

THE DIAGNOSTIC TEAM IN ACCORDANCE WITH TERMS OF THE STATE-RAILROAD AGREEMENT AND ARE HEREBY AUTHORIZED FOR CONSTRUCTION.

STATE OF TEXAS
 DEPARTMENT OF TRANSPORTATION
 PLANS OF PROPOSED
 RAILROAD GRADE CROSSING WARNING DEVICES
 ALAMO STREET IN LEVELLAND



HOCKLEY COUNTY
 NO SCALE
 © 2015 by Texas Department of Transportation
 (512) 416-2055; all rights reserved

Sheet No.	Description
1	Title Sheet
2	General Notes
3	Plans of Proposed
4	Warning Devices
5	Warning Devices

THE RAILROAD COMPANY SHALL ERECT AND MAINTAIN SUCH BARRICADES AND WARNING SIGNS OR USE SUCH PRECAUTIONS AS MAY BE NECESSARY IN THE OPINION OF THE TxDOT ENGINEER IN CHARGE AND SAFEGUARD THE NORMAL USE OF THE HIGHWAY DURING THE INSTALLATION OF THIS PROJECT. THE ASSOCIATION OF AMERICAN RAILROADS, SIGNAL SECTION, SPECIFICATIONS SHALL GOVERN FOR THIS PROJECT.

PROJECT STP
 CONTROL
 DOT NO. 017624S



GEORGE J. VILLARREAL, P. E.

DATE _____

APPROVED FOR CONSTRUCTION _____

DIRECTOR OF TRAFFIC OPERATIONS _____

THESE PLANS WERE PREPARED BY MEMBERS OF THE DIAGNOSTIC TEAM IN ACCORDANCE WITH TERMS OF THE STATE-RAILROAD AGREEMENT AND ARE HEREBY AUTHORIZED FOR CONSTRUCTION.

GENERAL NOTES

1. Signal circuits are designed to give 20 seconds Minimum Warning time prior to the arrival of the fastest train at this crossing. Refer to signal layout for total approach time.
2. Constant warning circuits are to be used at this location.
3. Conduit, fill dirt and crushed cover rock to be furnished in place by the Railroad Company or its Contractor at State's expense.
4. The Railroad Company or its Contractor will remove the existing cross bucks and dispose of the foundations.
5. The State or its Contractor will furnish and install or replace the appropriate pavement markings as outlined on the attached layout and standard sheet and in accordance with the guidelines in the Texas Manual on Uniform Traffic Control Devices.
6. The State or its Contractor will furnish and install or replace the following signs in accordance with the guidelines in the Texas Manual on Uniform Traffic Control Devices (TMUTCD) and the Standard Highway Sign Designs Manual for Texas (SHSD): 2 ea.(W10-1), 2 ea.(W10-2), 1 ea.(R8-8).
7. The State and City agrees to maintain advance warning signs placed along the roadways under their jurisdiction in accordance with the guidelines in the Texas Manual on Uniform Traffic Control Devices and as shown on the layout and standard sheets as acknowledged on the Title Sheet.
8. The Railroad Company or its Contractor shall furnish, install and maintain emergency notification signs (ENS) and sign mounting brackets.
9. The Railroad Company or its Contractor shall stencil the DOT-AAR numbers on the signal masts facing the adjacent roadway in 2" black lettering.
10. The State and City agrees to trim and maintain trees and vegetation for adequate visibility of the crossing signals and advance warning signs as acknowledged by signature of the Title Sheet.
11. The Railroad Company or its Contractor will provide traffic control in accordance with the guidelines in the Texas Manual on Uniform Traffic Control Devices.

-- DESCRIPTION OF PROJECT --

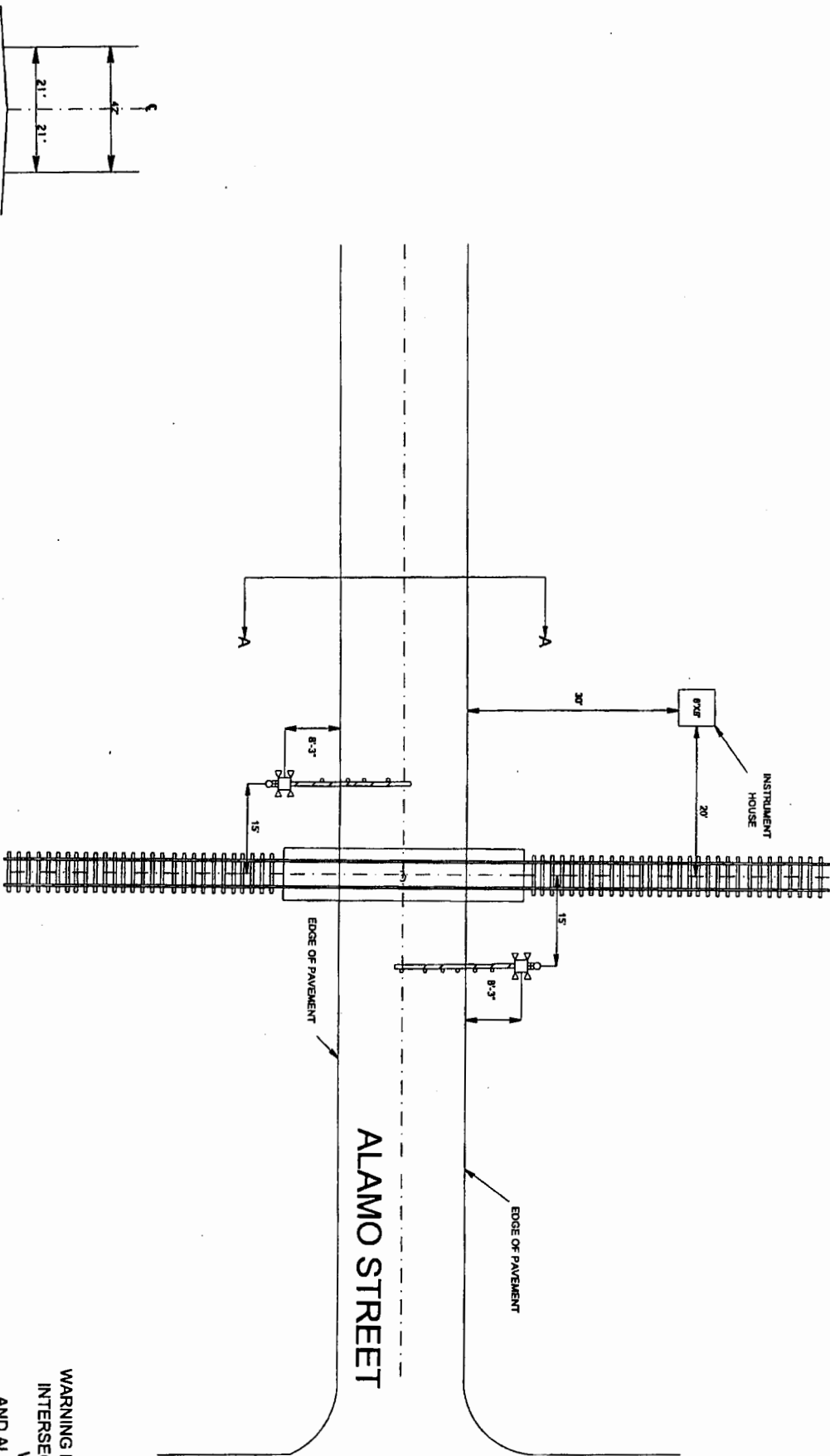
2 COMPLETE FLASHING LIGHTS WITH GATE ASSEMBLIES AND TWO BELLS WITH ADJUSTABLE GATE ARMS
 12" LAMP HOUSING SHALL BE USED AND EQUIPPED WITH LEDS
 (LIGHT EMITTING DIODES) OPERATED AT NOT LESS THAN
 8.5 VOLTS UNDER NORMAL OPERATING CONDITIONS.
 ADVANCED PREEMPTION

WARNING DEVICES AT THE
 INTERSECTION OF THE
 WTLR
 AND ALAMO STREET
 IN LEVELLAND

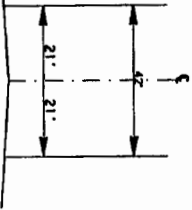
DOT NO. 017622D
 R.R.M.P. = 23.87

Texas Department of Transportation	
FILE NO.	PROJECT AIR NUMBER
6	
COUNTY	DISTRICT
TEXAS	3
SECTION	SECTION
	2
DATE	DESIGNED BY
	HOOKLEY
	APPROVED BY
	ALAMO ST

LAYOUT SHEET



SECTION A-A
 IN 25'



SH 114

ALAMO STREET

WARNING DEVICES AT THE
 INTERSECTION OF THE
 WTLR
 AND ALAMO STREET
 IN LEVELLAND

DOT NO. 017624S
 R.M.P. = 23.87

GEORGE J. VILLARREAL, P.E.
 DATE _____



LAYOUT SHEET

NO.	DATE	BY	CHECKED	DESCRIPTION
1				ISSUED FOR PERMIT
2				REVISED
3				REVISED

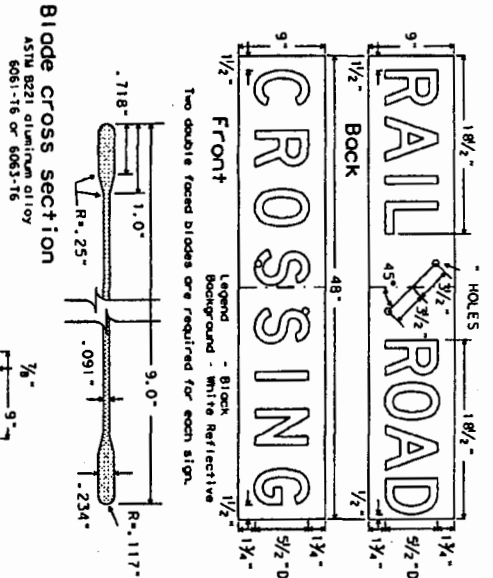
Texas Department of Transportation

PROJECT	ALAMO ST
SECTION	
DATE	
BY	HOCKLEY
CHECKED	
DATE	
NO.	188
STATE	TEXAS

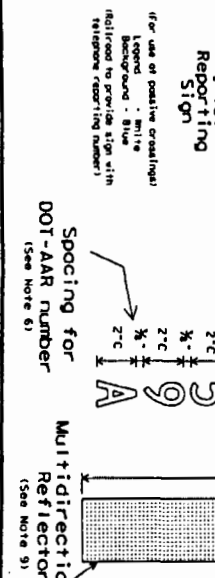
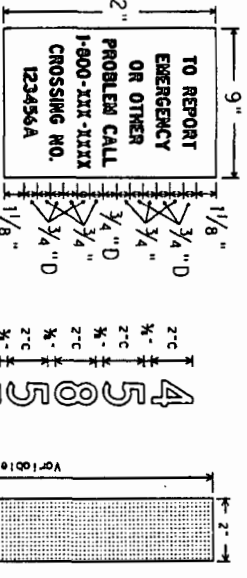
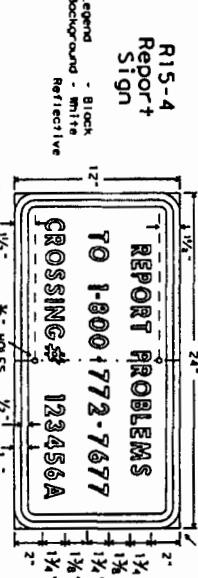
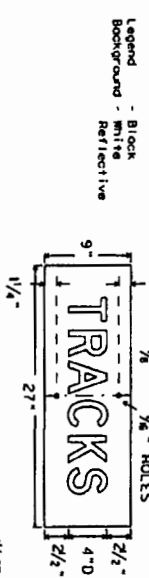
DISCLAIMER: The use of this standard is governed by the "Texas Engineering Practice Act". No warranty of any kind is made by TxDOT for any purpose whatsoever. TxDOT assumes no responsibility for the conversion of this standard to other formats or for incorrect results or damages resulting from its use.

DATE: FILE:

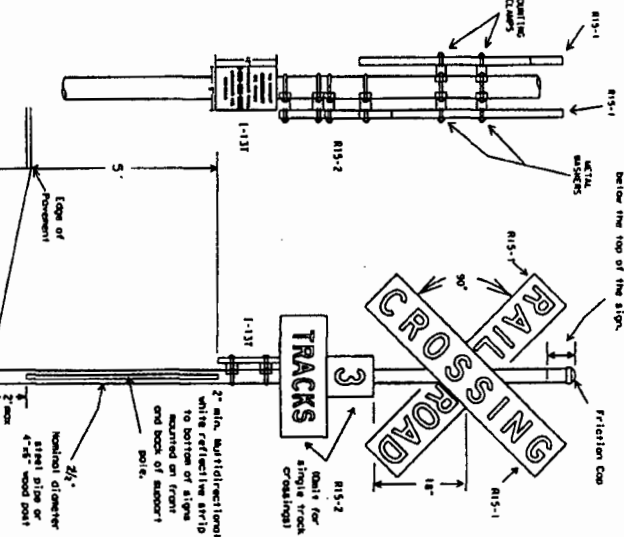
R15-1 Blade Detail



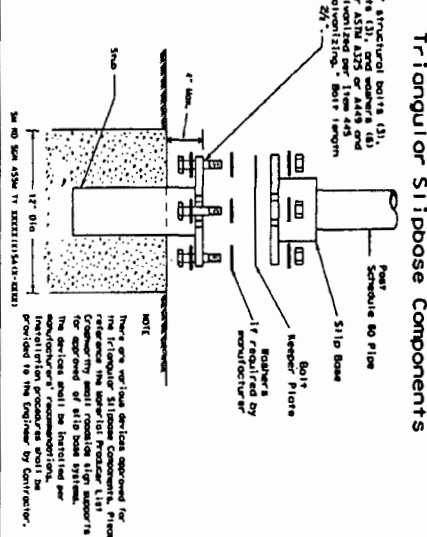
R15-2 Multiple Track Sign Detail



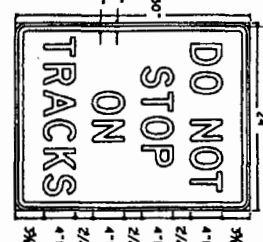
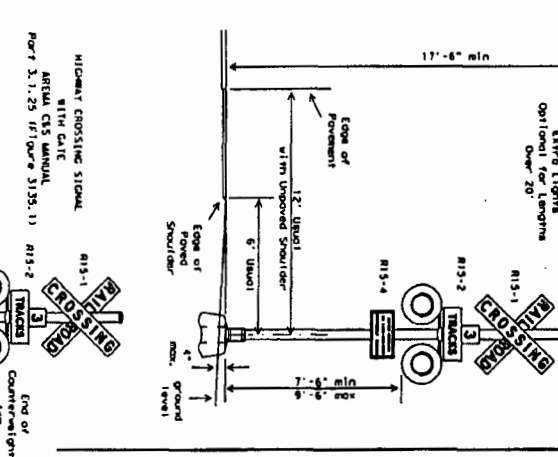
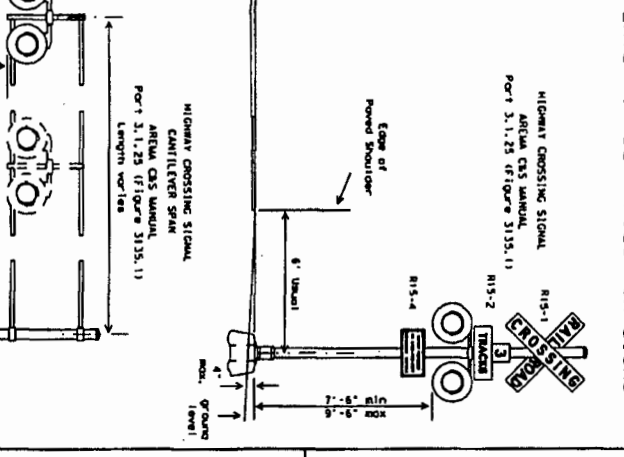
Assembled Elevation RAILROAD CROSSBUCK SIGN INSTALLATION (NEW POLE AND FOUNDATION) (R15-1)



Triangular Sillpost Components



LATERAL CLEARANCES FOR SIGNS



OPERATIONAL MATERIAL SPECIFICATIONS	ALUMINUM SIGN BLANKS	DSG-1110	DSG-1300
SIGN FACE MATERIALS	ALUMINUM SIGN BLANKS	DSG-1110	DSG-1300
BACKGROUND	ALUMINUM SIGN BLANKS	DSG-1110	DSG-1300
TEXT	ALUMINUM SIGN BLANKS	DSG-1110	DSG-1300
LETTERS & BORDERS	ALUMINUM SIGN BLANKS	DSG-1110	DSG-1300
LEADER & BORDERS	ALUMINUM SIGN BLANKS	DSG-1110	DSG-1300
LEADER & BORDERS	ALUMINUM SIGN BLANKS	DSG-1110	DSG-1300
LEADER & BORDERS	ALUMINUM SIGN BLANKS	DSG-1110	DSG-1300

- GENERAL NOTES:**
- All signs and installations shall conform to the American Railway Engineering and Maintenance of Way Association (AREMA) Manual for Signaling, Section 3, Signal Manual of Recommended Practices, Part 3.1.25 (Figure 3135.11).
 - Vertical clearance over the sign shall be maintained in accordance with the AREMA Manual for Signaling, Section 3, Signal Manual of Recommended Practices, Part 3.1.25 (Figure 3135.11).
 - Railroad foundation surfaces exposed to view shall be finished smooth uniform appearance results.
 - Top of foundation to be of the same elevation as the ground and no more than 4 inches above the surface of the ground.
 - Any existing crossbuck sign which is in poor condition, does not conform to the Texas Manual on Uniform Traffic Control Devices, or is not located in accordance with the plans shall be replaced and/or relocated.
 - The existing DOT-AAR number shall be placed on all crossbuck railroad signposts.
 - The existing DOT-AAR number shall be placed on the (un-signalized) signpost. The Emergency Report Sign (R15-4) shall be blue background with white legend. The sign shall be mounted facing the roadway. The sign text should convey a clear and simple message that is visible to anyone stopped or delayed on or near the railroad tracks, and to anyone reporting other railroad sign problems. The sign shall be black background with white legend. The Railroad may also stencil the number on the signpost. The signpost should be erected for each roadway approach and should normally be located on the right-hand side. See Standard Sheet RCPM for details. Minimum lateral clearances should be maintained between the railroad and highway, but exact location shall be as directed by the Engineer.
 - Construction and R15-2 sign, indicating the number of tracks, as approved by TxDOT, shall be installed on all railroad tracks.
 - Sign blank shall be one piece 0.080 inch thick sheet aluminum alloy conforming to DSG-7110, Aluminum Sign Blanks.
 - Multidirectional reflectors shall be white reflective sheeting with pressure sensitive adhesive conforming with Departmental material DMS - 3300, Sign Face Material.

Texas Department of Transportation
Traffic Operations Division

RAILROAD CROSSING SIGNS AND SIGNALS

RCSS (1) - 09

© 2001 August 2005

NO.	REVISION	DATE	BY	CHKD.	APP.	REASON
1	1	8/2005



YELLOWHOUSE MACHINERY CO.
Texas • Oklahoma

DREW COOPER
TXDOT
806 577-1949

Tex DOT
2nd PLANS FOR RAILROAD
GRADE CROSSING + WARNING DEVICES
* ALAMO STREET
* F.M. 3261

whitey

HOWARD GARLINGTON

806.763.0473 • 3405 E. Slaton Hwy • Lubbock, Texas 79404
Cell: 806.759.7952 • 1.800.658.9878 • Fax: 806.763.0331
howardg@yellowhouse.us

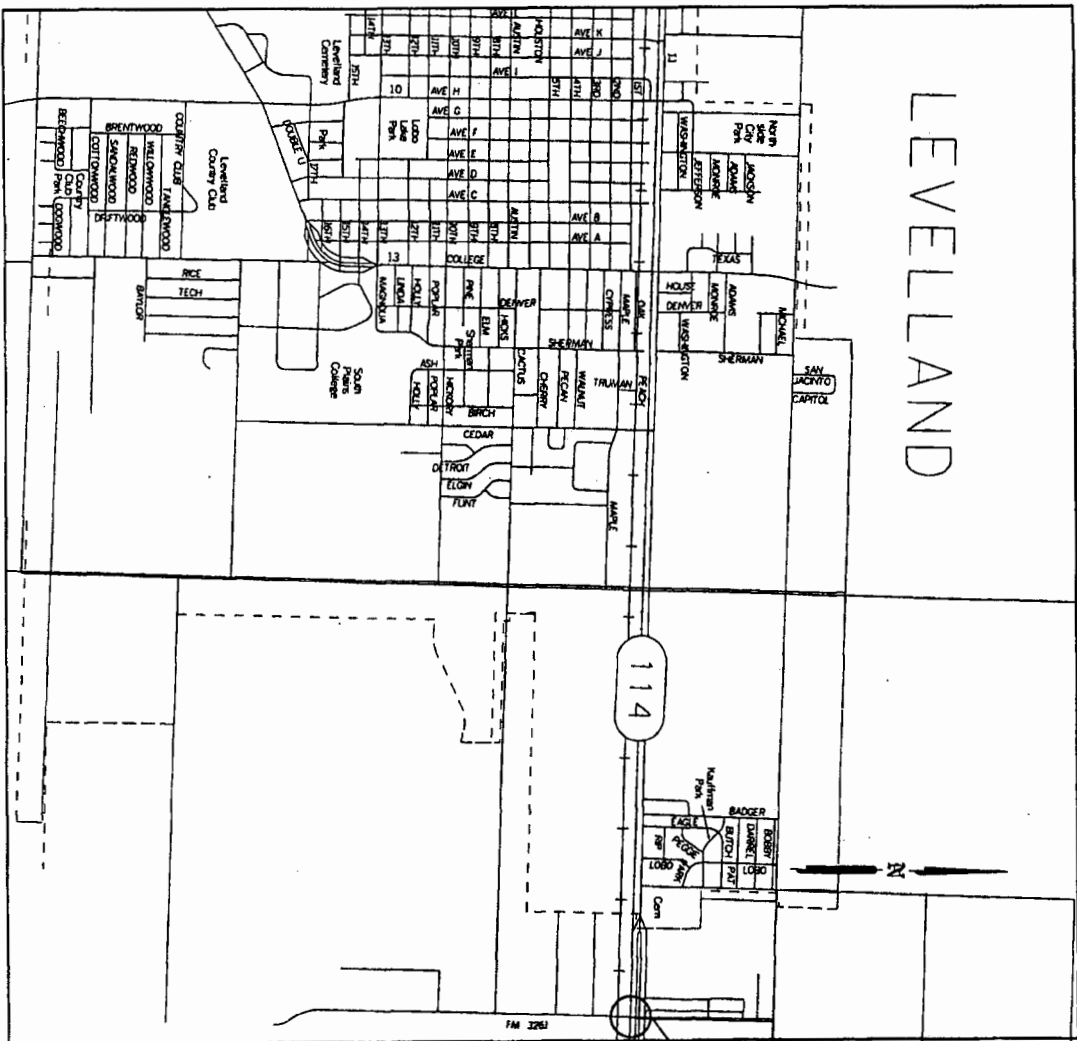
COUNTY _____ PROJ. NO. _____
 HWY. NO. _____ LETTING DATE: _____
 DATE ACCEPTED: _____

INDEX OF SHEETS

SHEET NO.	DESCRIPTION
1	TITLE SHEET
2	GENERAL NOTES
3	LAYOUT SHEET
4	WIRING DIAGRAM
5	RCSST(1)-09

THE DIAGNOSTIC TEAM IN ACCORDANCE WITH TERMS OF THE STATE RAILROAD AGREEMENT AND ARE HEREBY AUTHORIZED FOR CONSTRUCTION.

STATE OF TEXAS
 DEPARTMENT OF TRANSPORTATION
 PLANS OF PROPOSED
 RAILROAD GRADE CROSSING WARNING DEVICES
 FM 3261 IN LEVELLAND



HOCKLEY COUNTY
 NO SCALE
 © 2015 by Texas Department of Transportation
 (512) 416-2055; all rights reserved

Sheet No.	Description	Scale
1	Title Sheet	
2	General Notes	
3	Layout Sheet	
4	Wiring Diagram	
5	HOCKLEY	

THE RAILROAD COMPANY SHALL ERRECT AND MAINTAIN SUCH BARRICADES AND WARNING SIGNS OR USE SUCH PRECAUTIONS AS MIGHT BE NECESSARY, IN THE OPINION OF THE TRUCK ENGINEER, TO INSURE AND SAFEGUARD THE NORMAL USE OF THE HIGHWAY DURING THE INSTALLATION OF THIS PROJECT. THE ASSOCIATION OF AMERICAN RAILROADS, SIGNAL SECTION, SPECIFICATIONS SHALL GOVERN FOR THIS PROJECT.

PROJECT STP
 CONTROL
 DOT NO. 017622D



GEORGE J. VILLARREAL, P. E.

DATE _____

RECORDED FOR APPROVAL _____

DISTRICT ENGINEER _____

APPROVED FOR CONSTRUCTION _____

DIRECTOR OF TRAFFIC ORGANIZATION _____

GENERAL NOTES

1. Signal circuits are designed to give 20 seconds Minimum Warning time prior to the arrival of the fastest train at this crossing. Refer to signal layout for total approach time.
2. Constant warning circuits are to be used at this location.
3. Conduit, fill dirt and crushed cover rock to be furnished in place by the Railroad Company or its Contractor at State's expense.
4. The Railroad Company or its Contractor will remove the existing cross bucks and dispose of the foundations.
5. The State or its Contractor will furnish and install or replace the appropriate pavement markings as outlined on the attached layout and standard sheet and in accordance with the guidelines in the Texas Manual on Uniform Traffic Control Devices.
6. The State or its Contractor will furnish and install or replace the following signs in accordance with the guidelines in the Texas Manual on Uniform Traffic Control Devices (TMUTCD) and the Standard Highway Sign Designs Manual for Texas (SHSD): 1 ea. (W10-1), 2 ea. (W10-2), 1 ea. (R8-8).
7. The State agrees to maintain advance warning signs placed along the roadways under their jurisdiction in accordance with the guidelines in the Texas Manual on Uniform Traffic Control Devices and as shown on the layout and standard sheets as acknowledged on the Title Sheet.
8. The Railroad Company or its Contractor shall furnish, install and maintain emergency notification signs (ENS) and sign mounting brackets.
9. The Railroad Company or its Contractor shall stencil the DOT-AAR numbers on the signal masts facing the adjacent roadway in 2" black lettering.
10. The State agrees to trim and maintain trees and vegetation for adequate visibility of the crossing signals and advance warning signs as acknowledged by signature of the Title Sheet.
11. The Railroad Company or its Contractor will provide traffic control in accordance with the guidelines in the Texas Manual on Uniform Traffic Control Devices.


-- DESCRIPTION OF PROJECT --

2 COMPLETE FLASHING LIGHTS WITH GATE ASSEMBLIES AND TWO BELLS WITH ADJUSTABLE GATE ARMS
 12" LAMP HOUSING SHALL BE USED AND EQUIPPED WITH LED'S
 (LIGHT EMITTING DIODES) OPERATED AT NOT LESS THAN
 8.5 VOLTS UNDER NORMAL OPERATING CONDITIONS.

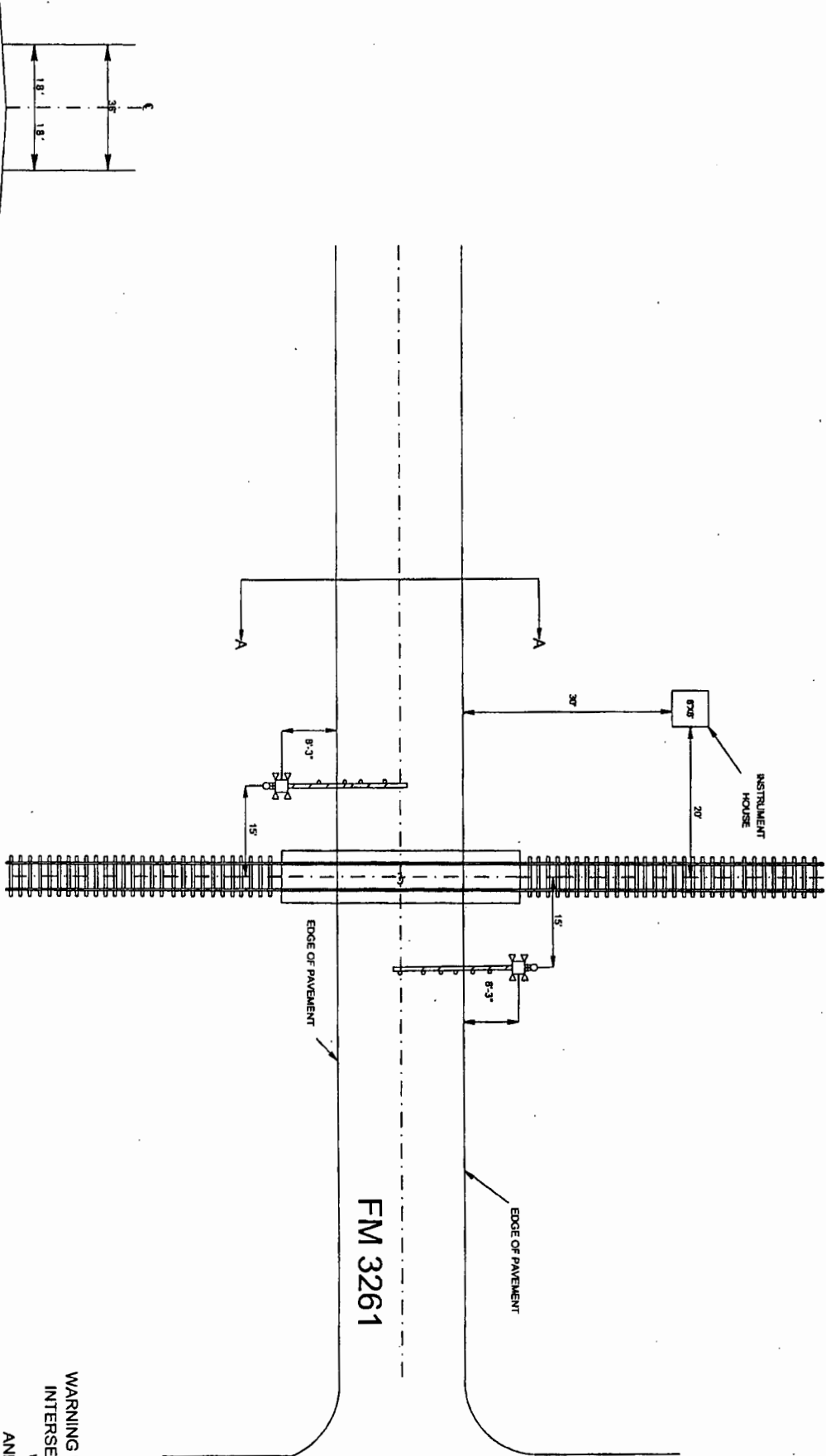
WARNING DEVICES AT THE
 INTERSECTION OF THE

WTLR
 AND FM 3261
 IN LEVELLAND

DOT NO. 017622D
 R.R.M.P. = 22.35

	
STATE	COUNTY
TEXAS	HOOCKLEY
SECTION	SECTION
5	2
DATE	DATE
	FM 3261

LAYOUT SHEET



SH 114

FM 3261

WARNING DEVICES AT THE
 INTERSECTION OF THE
 WTLR
 AND FM 3261
 IN LEVELLAND

DOT NO. 017622D
 R.R.M.P. = 22.35

GEORGE J. VILLARREAL, P.E.

DATE



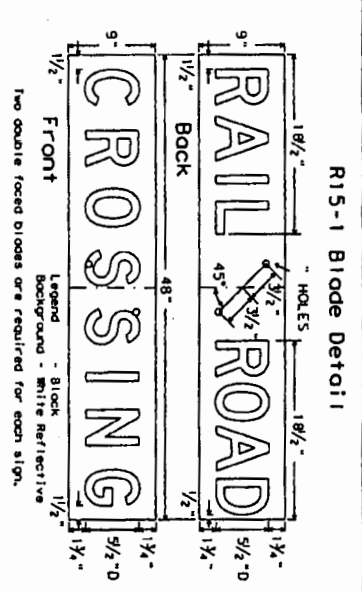
LAYOUT SHEET

Texas Department of Transportation

NO.	DATE	BY	CHECKED	APP. NO.
1		LBH	HOOKLEY	
2		LBH	HOOKLEY	
3		LBH	HOOKLEY	

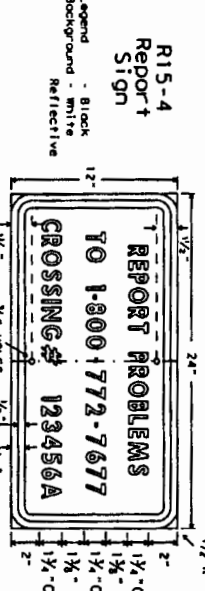
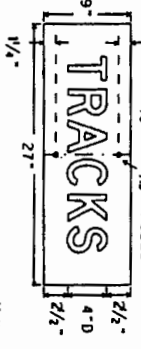
DISCLAIMER: The use of this standard is governed by the "Texas Engineering Practice Act". No warranty of any kind is made by TxDOT for any purpose whatsoever. TxDOT assumes no responsibility for the conversion of this standard to other formats or for incorrect results or damages resulting from its use.

DATE: FILE:

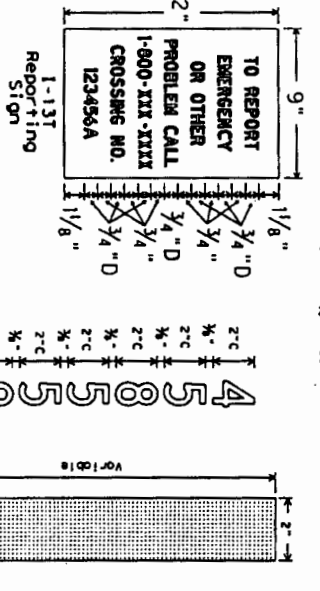


R15-1 Blade Detail
Blade cross section
ASTM B221 aluminum alloy
6061-T6 or 6063-T6

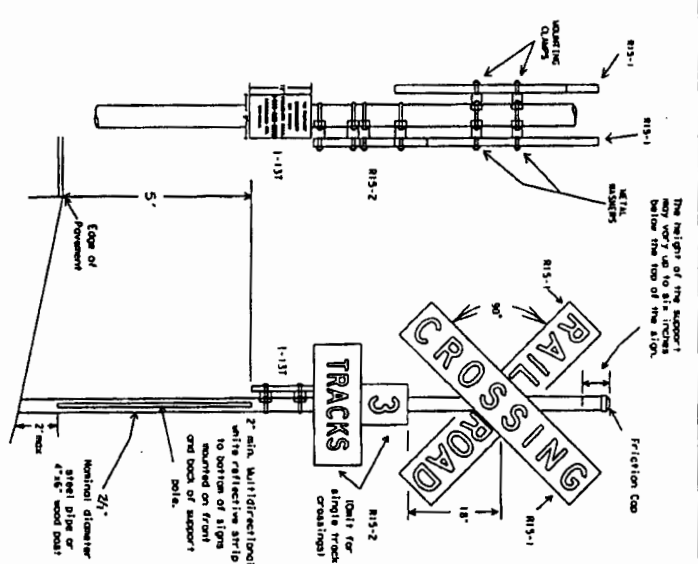
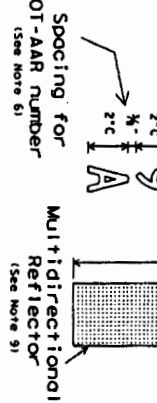
R15-2 Multiple Track Sign Detail
Legend - Black
Background - White
Reflective



R15-4 Report Sign
Legend - Black
Background - White
Reflective

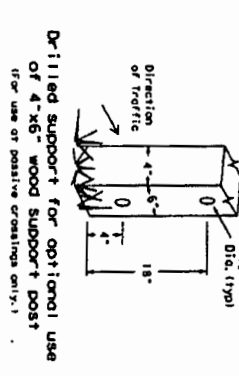
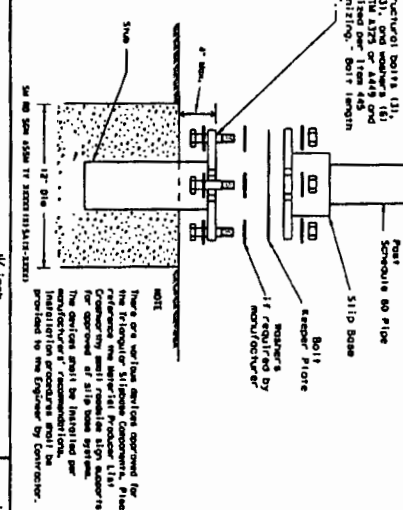


R1-3T Reporting Sign
For use of positive crossings!
Legend - White
Background - Blue
Reflective to provide sign with reflective reporting number!

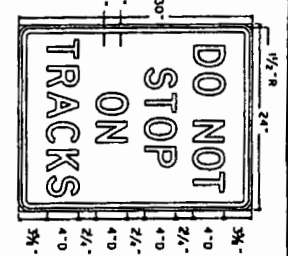
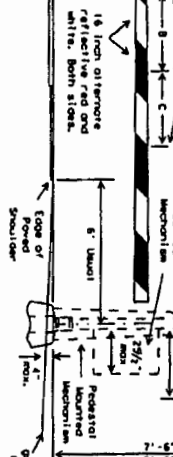
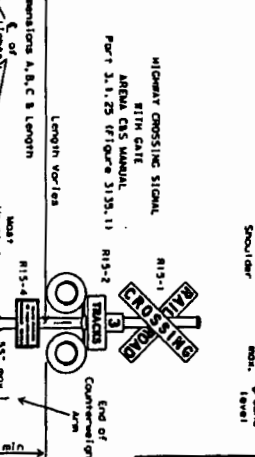
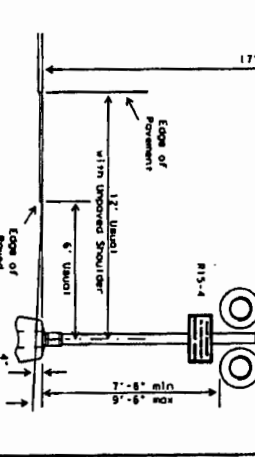
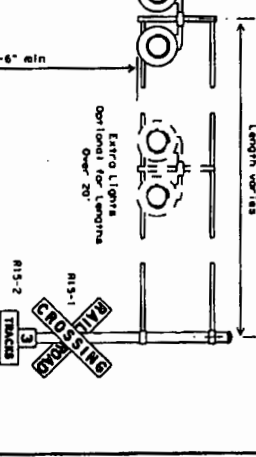
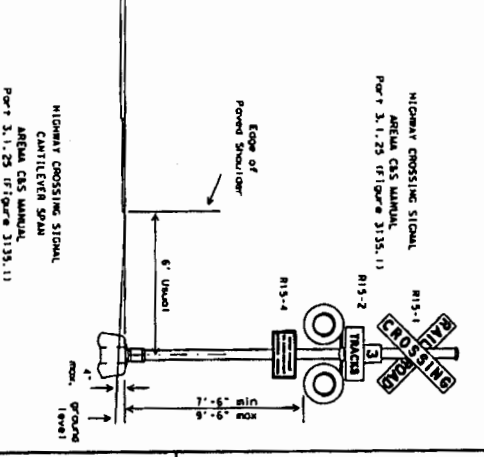


Assembled Elevations RAILROAD CROSSBUCK SIGN INSTALLATION (NEW POLE AND FOUNDATION) (R15-11)

Triangular Sillpost Components



LATERAL CLEARANCES FOR SIGNS



R8-8
24" x 30"

DEPARTMENTAL MATERIAL SPECIFICATIONS	
ALUMINUM SIGN BLANKS	DM-7110
SIGN FACE MATERIALS	DM-8300
USAGE	SIGN FACE MATERIAL
BACKGROUND	BLUE
TEXT	TYPE C SHEETING
LEGEND & BORDERS	WHITE
TYPE C SHEETING	TYPE C SHEETING
LEGEND & BORDERS	BLACK
	ARTIFICIAL NON-REFLECTIVE FILM

- GENERAL NOTES**
- All signs and installations shall conform to the American Railway Engineering and Maintenance of Way Association (AREMA) Manual for Signaling, Part 3.1.25 (Figure 3.135.11).
 - Unfinished metal parts shall receive a prime coat of paint and no repainting.
 - Railroad Company standard type signal foundations may be used. Concrete foundation surfaces exposed to view shall be finished by rubbing with a corundum stone or equal device until a smooth uniform appearance results.
 - Top of foundation to be at the same elevation as the traveled way and no more than 4 inches above the surface of the ground.
 - Any existing crossbuck sign which is in poor condition, does not conform to the Texas Manual on Uniform Traffic Control Devices, or is not located in accordance with the plans shall be replaced and/or relocated.
 - The designated DOT-AR number shall be placed on all crossbuck signs and signs for railroad crossings on steel on the (un-signalized) side of the crossing. The Emergency Report sign (R1-3T) shall be blue background with white legend. The sign shall be mounted facing the roadway. The sign text should convey a clear and simple message that is visible to anyone stopped or delayed on the roadway. The sign shall be mounted facing the roadway. The sign shall be mounted facing the roadway. The sign shall be mounted facing the roadway.
 - A crossbuck sign should be erected for each roadway approach and should normally be located on the right-hand side. See Standard Sheet RCPM for details. Minimum lateral clearances should be maintained between the railroad and highway, but exact location shall be as directed by the Engineer.
 - A crossbuck and R15-2 sign, indicating the number of tracks, should be installed at all railroad crossings (adjacent tracks reported by less than 100 feet).
 - Sign boards shall be one piece (3/8) inch thick sheet aluminum 1/4 inch wide by 1/4 inch high. The sign shall be mounted on a 1/2 inch diameter reflective post. The sign shall be mounted on a 1/2 inch diameter reflective post. The sign shall be mounted on a 1/2 inch diameter reflective post.
 - With pressure sensitive adhesive conforming with Departmental DMS - 8300, Sign Face Material.

Texas Department of Transportation
Traffic Operations Division
RAILROAD CROSSING SIGNS AND SIGNALS

RCSS(1) -09

NO.	DATE	BY	REVISION
1-02	August 2005	TC	ADDITIONAL SIGNAGE
4-02	August 2005	TC	ADDITIONAL SIGNAGE
5-05	August 2005	TC	ADDITIONAL SIGNAGE
6-05	August 2005	TC	ADDITIONAL SIGNAGE
8-05	August 2005	TC	ADDITIONAL SIGNAGE

**Motion by Commissioner Barnett, seconded by Commissioner Thrash,
4 Votes Yes, 0 Votes No, that Commissioners' Court appoint a Consultant Selection
Review Committee in conjunction with runway improvements at the Levelland
Municipal Airport, as per List of Airport Advisory Board Members recorded below.**

AGENDA MEMORANDUM

TO: Honorable Judge and County Commissioners
FROM: Erik Rejino, City of Levelland
DATE: July 2, 2015
ITEM: Consider and take necessary action to appoint a Consultant Selection Review Committee in conjunction with runway improvements at the Levelland Municipal Airport.

Early last month the County and the City both adopted a resolution formally requesting approximately \$765,000 from the Texas Department of Transportation (TXDOT) Aviation Division as well as approving a combined \$85,000 match to conduct runway improvements at the Levelland Municipal Airport. Since then I have met with TXDOT Aviation officials and have been given instructions on the next steps. The TXDOT Commission will consider the funding request on July 30th and shortly after that the process to select an engineer to design the project will begin.

Prior to proceeding with the engineer selection process the City and County will need to appoint a Consultant Selection Review Committee. This Committee will determine the selection criteria, review qualifications, and recommend a firm. After visiting with TxDOT we are recommending the appointment of the Airport Advisory Board to serve in this capacity as they are already involved with this particular project and the airport. The Airport Advisory Board Members are listed below:

Curtis Thrash
Manuel Mendez
David Barnes
Dave Graf
Raymon Jackson

I will be at the meeting to address any questions you may have.

DESIGNATION OF SPONSOR'S
CONSULTANT SELECTION COMMITTEE

1. Barbra Pinner & Larry Sprawls, Mayor & County Judge
(Name) (Title)

with the City of Levelland and Hockley County designate the following named individuals as the Consultant Selection committee, for 1505LVLND. The committee is authorized to determine selection criteria, review qualifications of candidate firms, conduct interviews, if necessary, and select a firm for the award of the design contract, based on a consensus ranking by the committee members. The decision of the selection committee will be final unless some discrepancy is determined to have occurred in the selection process.

Name	Title (if appropriate):
1. <u>Curtis Thrash</u>	_____
2. <u>Manuel Mendez</u>	_____
3. <u>David Barnes</u>	_____
4. <u>Pave Graf</u>	_____
5. <u>Raymon Jackson</u>	_____

The City of Levelland and Hockley County has caused this to be duly executed in its name, this 20th day of July 2005.

City of Levelland, Texas
(Sponsor)

By: Barbra Pinner

Title: Mayor

Hockley County, Texas
(Sponsor)

By: Raymond Jackson

Title: County Judge

CERTIFICATION OF PROJECT FUNDS

I, Barbra Pinner & Larry Sprouts Mayor, County Judge
(Name) (Title)

do certify that sufficient funds to meet the City of Levelland and Hockley County's share of project costs as identified for the project and will be available in accordance with the schedule shown below:

SPONSOR FUNDS

<u>Source</u>	<u>Amount</u>	<u>Date Available</u>
<u>Airport Fund</u>	<u>\$85,000</u>	<u>08/01/2015</u>

City of Levelland, Texas
(Sponsor)

By: Barbra Pinner

Title: Mayor

Date: 07/02/15

Hockley County, Texas
(Sponsor)

By: [Signature]

Title: County Judge

Date: 7/1/15

DESIGNATION OF SPONSOR'S AUTHORIZED REPRESENTATIVE

I, Barbra Pinner & Larry Spraul, Mayor & County Judge
(Name) (Title)
with the City of Levelland and Hockley County designates Erik Rejino, Director of Community Development
(Name, Title)
as the City of Levelland and Hockley County authorized representative for the 1505LVLND project, who shall have the authority to make approvals and disapprovals as required on behalf of the City of Levelland and Hockley County.

City of Levelland Texas
(Sponsor)

By: Barbra Pinner
Title: Mayor
Date: 07/02/15

Hockley County, Texas
(Sponsor)

By: [Signature]
Title: County Judge
Date: 7/1/15

DESIGNATED REPRESENTATIVE

Mailing Address: P.O. Box 1010
Levelland, TX 79336

*Physical/Overnight Address: 1709 Ave H
Levelland, TX 79336

Telephone Number: (806) 894-0113

Fax Number: (806) 894-0119

E-mail Address: erejino@levellandtexas.org
* ALL GRANT AGREEMENTS ARE SENT BY OVERNIGHT MAIL

CERTIFICATION OF AIRPORT PROPERTY INTERESTS

By signature below, the Sponsor does certify that the airport property, as reflected on the property map and attorney certificate dated November 2, 2009 and on file with TxDOT Aviation Division, remains unchanged and is an accurate reflection of the property owned and/or controlled for the

Levelland Municipal Airport
(Airport Name)

Barbara Pinner
(Sponsor)

By: Barbara Pinner

Title: Mayor

Date: 07/20/15

OUR GOALS
MAINTAIN A SAFE SYSTEM • ADDRESS CONGESTION • CONNECT TEXAS COMMUNITIES • BEST IN CLASS STATE AGENCY
An Equal Opportunity Employer



ATTORNEY'S CERTIFICATE OF AIRPORT PROPERTY INTERESTS

Re: Those certain tracts of land, including servient interests, described as:

LEVELLAND MUNICIPAL AIRPORT

and also described in the Attachment A property map, attached hereto and made a part hereof for all purposes (hereinafter referred to as the Airport).

I, RICHARD L. HUSEN, being currently licensed to practice law in the State of Texas, and being the Attorney acting for the City of Levelland, Texas (hereinafter referred to as "Sponsor") do certify that as of the 14th day of July, 2015, Sponsor holds fee simple title and other good and sufficient title to all tracts, such as to qualify Sponsor and Airport under the proposed Texas Department of Transportation Airport Project Participation Agreement now contemplated between Sponsor and the Texas Department of Transportation, a copy of said draft Agreement having been made available to me prior to execution of these presents.

I further certify that Attachment B to these presents which is made a part hereof for all purposes, as of the 14th day of July, 2015, contains a list of all documents, including, but not limited to, deeds, right of way easements, clearance easements, utility easements, or abstracts examined by me in connection herewith, and, furthermore that said Attachment B contains a listing of any interests or matters which would adversely affect the use of said airport, as contemplated by said Agreement, as an airport, such adverse interests including, but not limited to, and easements on said tracts.

In witness hereof, I affix my signature this 14th day of July, 2015.

Complete with the following:

Attachment A (Property Map)
Attachment B

Richard L. Husen
Attorney at Law
SBN: 10323700
607.8th Street
P.O. Box 1089
Levelland, Texas 79336

For: City of Levelland
Airport Sponsor

Discover a Texas Treasure

1709 Avenue H • P.O. Box 1010 • Levelland, TX 79336 • (806) 894-0113 • Fax (806) 894-0119

"B"
EXHIBIT "X"

Tracts 1 and 2: Warranty Deed, 3/12/45
Vol. 82 p. 18

Tracts 3, 4 and 5: Warranty Deed, 11/3/45
Vol. 83 pa. 148

Tract 6: Warranty Deed, 7/18/67
Vol. 250 p. 1

Tracts 7 and 8: Condemnation Order, 5/27/86
District Court of Hockley County
Vol 584, p 798

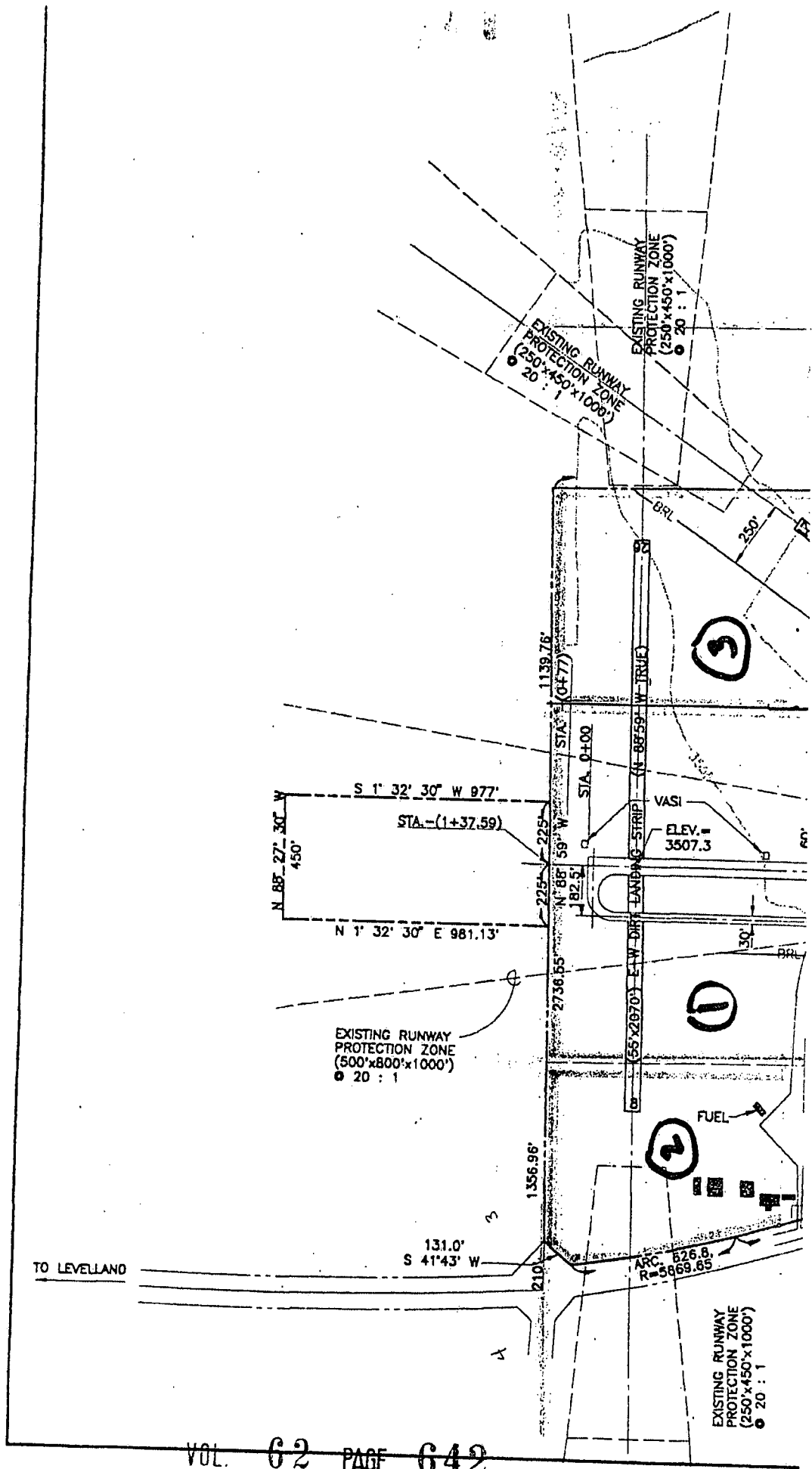
Tracts 9 and 10: Warranty Deed, 8/1/92
File No. 92-3933

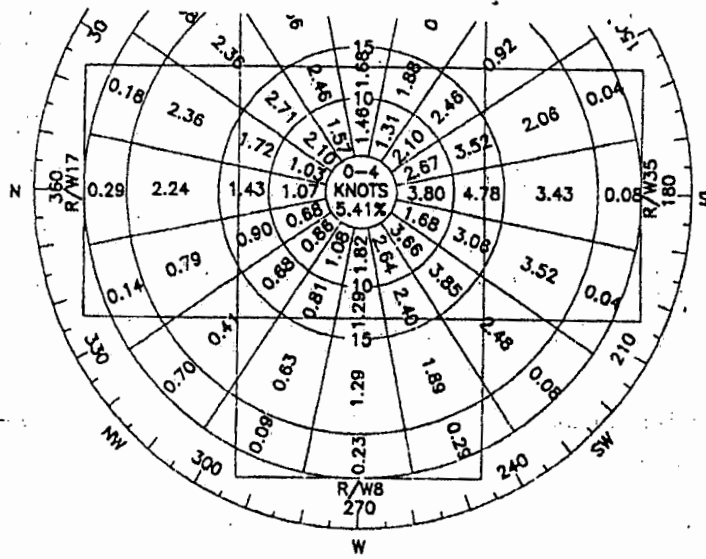
Tract 11: Avigation Easement, 7/22/92
File No. 92-3934

Note: The Tracts 1 and 2, and Tracts 3, 4 and 5, were originally conveyed only to Hockley County. By deeds dated August 19, 1959 (Vol 178 p. 236) and November 21, 1960 (Vol. 186 p. 164) Hockley County conveyed an undivided one-half interest to the City of Levelland. copies of these deeds are also attached hereto.

07-09-92 8:57AM
02-2530

1-INCH=400FT



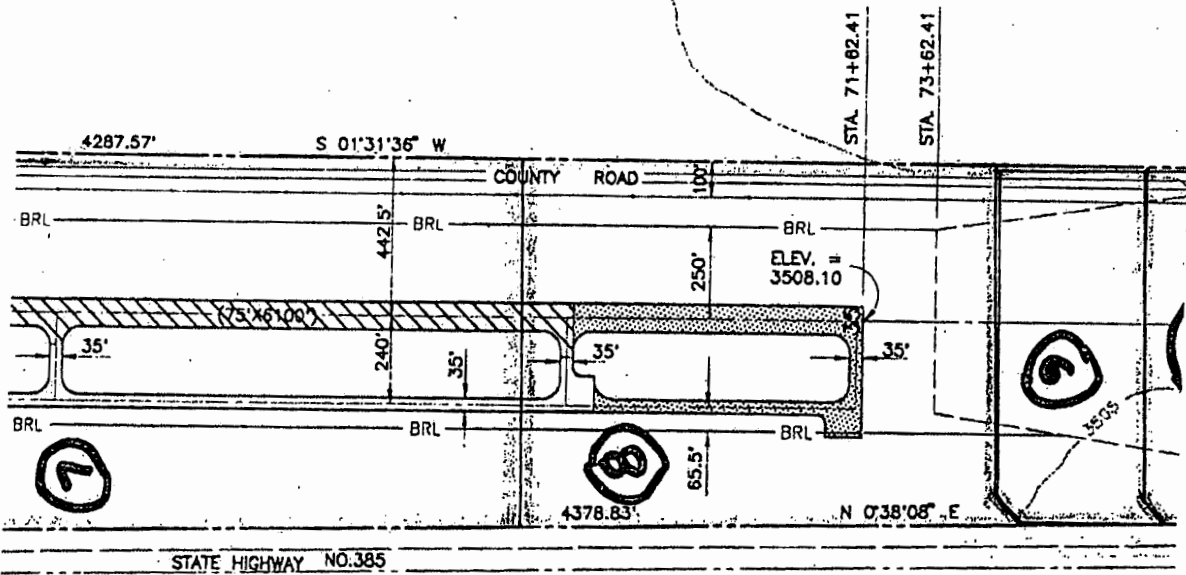


WIND ROSE
ALL WEATHER

AIRPORT EASEMENT BOUND
FENCE
BUILDING RESTRICTION LI
CONTOUR
DRAINAGE CULVERT
RECONSTRUCT & OVERLA
OVERLAY AIRFIELD PAVEM

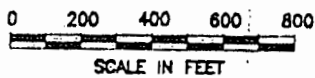
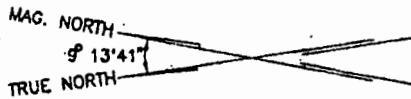
NOTE:
13 KNOTS COVERAGE

SOURCE:
DEPT. OF COMMERCE,
WIND TABULATION PERI
(43,816 OBSERVATIONS)



KE
IRNER
8, LEAGUE 29
EV. 3506.74

14



STATE OF TEXAS
TERRY L. BIEDERB
744101
REGISTERED
PROFESSIONAL ENGINEER

7-20

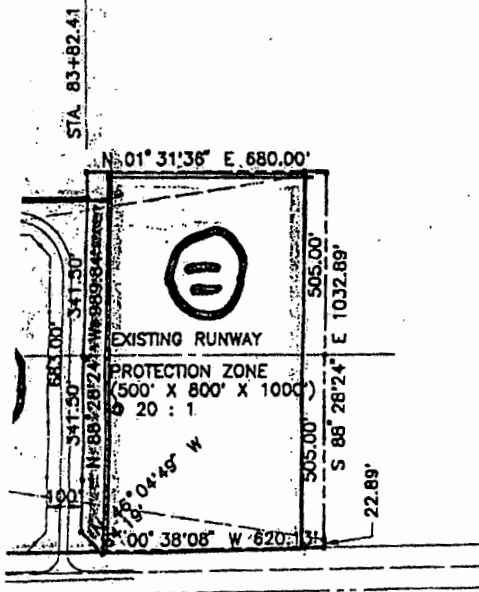
Date

LINE			
	BRL		
	3500		
FIELD PAVEMENT			

RUNWAY END DATA			
RUNWAY END	ELEV.	LATITUDE	LONGITUDE
N (17 EXISTING)	3503.4	33° 33' 39.38"	102° 22' 18.76"
S (35 EXISTING)	3508.1	33° 33' 05.27"	102° 22' 19.88"
E (28 EXISTING)	3506.7	33° 33' 37.50"	102° 22' 04.70"
W (8 EXISTING)	3501.5	33° 33' 37.68"	102° 22' 29.15"
NE (21 EXISTING)	3500.1	33° 33' 31.79"	102° 22' 03.65"
SW (3 EXISTING)	3498.5	33° 33' 13.67"	102° 22' 19.09"
E (28 FUTURE)*	3492.0	33° 33' 03.31"	102° 21' 22.37"
W (8 FUTURE)*	3500.0	33° 33' 03.68"	102° 22' 12.45"

/57 TO 12/61

* ESTIMATED ELEVATION SUBJECT TO VERIFICATION AT TIME OF CONSTRUCTION



Designed by:

Date: 7-20-92

Revision:



Parkhill, Smith & Cooper, Inc.
Engineers Architects Planners

CLIENT : LEVELLAND MUNICIPAL AIRPORT
PROJECT : RUNWAY & TAXIWAY IMPROVEMENTS

SHEET TITLE :
PROJECT AIRPORT LAYOUT PLAN

Issuing Office : LUBBOCK, TEXAS
Project No. : 2530
Q.A. : T.G.B.
Checked by : L.J.V.

Drawn by : L.R.
Scale : AS SHOWN
Date : JULY 1992

SHEET 2 OF 11

RECORD DRAWING
VOL. 62 PAGE 645

Motion by Commissioner Barnett, seconded by Commissioner Thrash, 4 Votes Yes, 0 Votes No, that Commissioners' Court approve the Intergovernmental Lease Agreement Extension Amendment with the Texas Department of Family and Protective Services. As per Intergovernmental Lease Agreement Extension Amendment recorded below.



TEXAS HEALTH AND HUMAN SERVICES COMMISSION

CHRIS TRAYLOR
EXECUTIVE COMMISSIONER

INTERGOVERNMENTAL LEASE AGREEMENT EXTENSION AMENDMENT

Lease: 00152
Term: 09-1-2015 through 08-31-2018

This Agreement is made and entered into on this date, 7/23/15, by and between the LESSOR, Hockley County, and LESSEE, STATE OF TEXAS acting by and through the Health and Human Services Commission.

The occupying agency, the Texas Department of Family and Protective Services (DFPS), shall continue to occupy and remain in possession of the leased premises for a period of 36 months, from September 1, 2015 through August 31, 2018. This renewal amendment is for a period of 36 months as proposed on the initial agreement. This renewal period pertains to 7500 square feet of space at \$0.00 annual rate per square foot for a total of \$0.00 rent per month.

All other terms and conditions remain the same. This amendment is by mutual agreement between Lessee and Lessor.

LESSOR:

Hockley County
802 Houston Street Suite 101
Levelland, Texas 79336

By: [Signature]
(Signature)

Judge Larry Sprowls
Hockley County Judge

7/13/15
(Date)

LESSEE:

Health and Human Services Commission
6302 Iola Ave
Lubbock, TX 79424

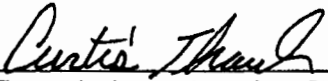
By: [Signature]
(Signature)

Roy L. Threadgill, MBA
Regional Director Administrative Services
Health & Human Services Commission

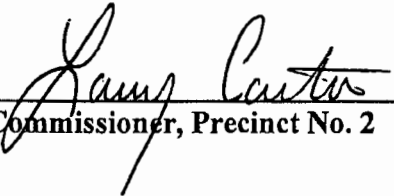
7/23/15
(Date)

There being no further business to come before the Court, the Judge declared
Court adjourned, subject to call.

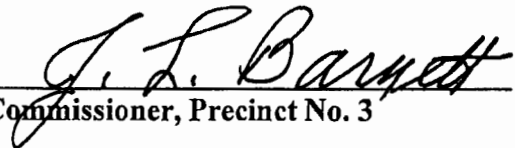
The foregoing Minutes of a Commissioners' Court meeting held on the 13th
day of July, A. D. 2015, was examined by me and approved.



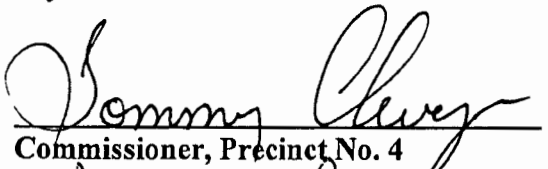
Commissioner, Precinct No. 1



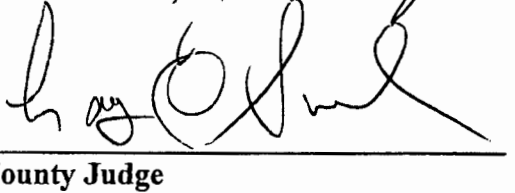
Commissioner, Precinct No. 2




Commissioner, Precinct No. 3



Commissioner, Precinct No. 4



County Judge



IRENE GUMULA, County Clerk, and
Ex-Officio Clerk of Commissioners' Court
Hockley County, Texas